

Evolution in Natural Surfaces

PATHWAYS PATIOS GARDEN TRAILS LANDSCAPING

3 Steps to a Successful Project

1. *Suitable DG / Crushed stone
2. Apply TechniSoil® at suggested ratios
3. Proper compaction (plate compactor)



www.TechniSoil.com

* Consult with your TechniSoil dealer for recommended options.

For heavier use applications such as driveways & public paths, please visit:

TechniSoil.com/commercial



TechniSoil® is a ready to use, liquid stabilizer that is specifically designed to bind with crushed stone and decomposed granite to create a natural surface.

Benefits of TechniSoil:

- Ready to use
- Easy to apply
- EPA compliant



TechniSoil
North America, LLC
evolution in natural surfaces

www.TechniSoil.com
info@TechniSoil.com
Phone: 877.356.2250

Watch the install video!
Scan below with your smart phone




TechniSoil®
natural surfaces

Pathway Stabilizer

• Pathways • Patios • Garden Trails • Landscaping



**Use only with approved
3/8"-1/2" minus:
Decomposed Granite
Crushed Stone Pathway Mixes**

Application Instructions

1. AGGREGATE SELECTION

Please consult your dealer for recommended material.



TechniSoil® will not work with sand, granite screenings or screened aggregates. Material must have structural aggregate and a small amount of screenings to attain best results.

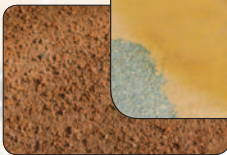
2. SITE CONDITIONS

Prepare sub-base using ABC or equivalent at a 2" min. Spread & level crushed stone mix or decomposed granite to a 2-3" depth.



3. PRE-WATER

If the crushed stone is dry, lightly water to assist with absorption.



Recommended appliers: garden watering can or spray device.

4. PLACEMENT

Apply TechniSoil® to surface at **15 sf./gallon**. Allow TechniSoil® to fully absorb through the material.



5. COMPACTION

When surface has cured and is lightly damp (usually 45-90 min after application), compact surface with vibratory plate compactor. 2-3 passes recommended.



For hard to reach areas, please use a hand tamper. **Do not compact when material is saturated.**

6. TOP COAT

Wait 6-24 hours after compaction, then apply TechniSoil® 'top coat' at **45 sf./gallon**. Allow 24-72 hours for surface to cure before use.



- Clean equipment with water after usage.

Need help troubleshooting?

Please visit: TechniSoil.com/pathway-help

Create a Durable Surface

For more information, please visit:

www.TechniSoil.com

Existing Pathways

If you have existing pathway or patio, you can also use TechniSoil®.

Coverage: 15 sf./gallon

Surface Preparation

1. Scarify at least 1" of surface and make any needed repairs
2. Lightly water surface to enhance absorption
3. Follow steps 4-6 on APPLICATION INSTRUCTIONS

It is recommended to use new DG or crushed stone pathway mixes to assure best results.

Maintenance Coat

Apply TechniSoil® maintenance coat when needed (12-24 Months). **45 sf./gallon.**

Weather Tips

Do not apply TechniSoil 72 hours before rainfall.

Crushed Stone/DG mixes with higher fines, may soften in wet weather conditions, but will solidify once the surface dries.

Crushed Stone/DG mixes with larger aggregate (1/2"-3/4" diameter) will remain harder in wet weather conditions.

Please consult your dealer to determine the recommended material for your application or visit:

TechniSoil.com/weather-tips